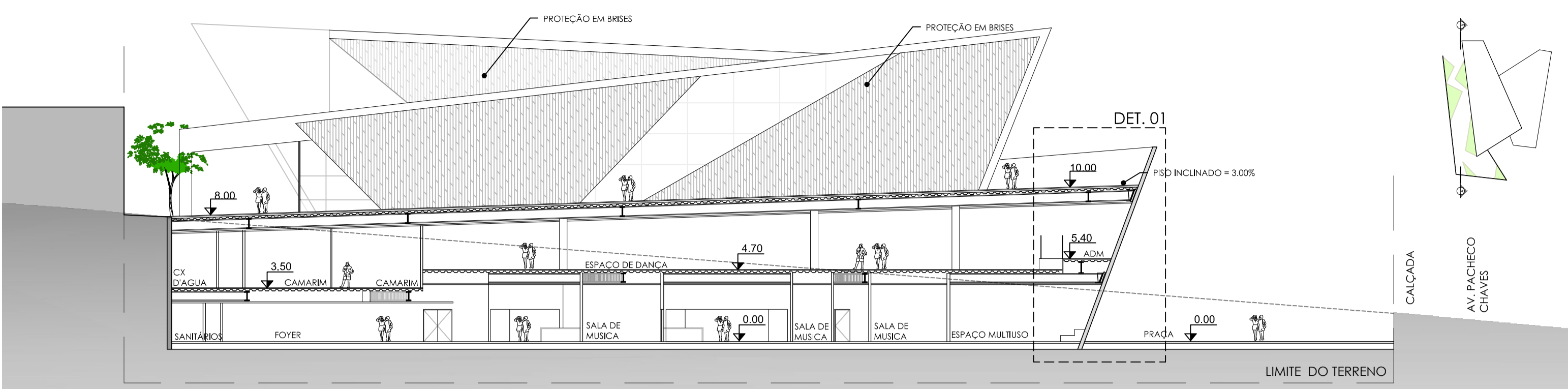
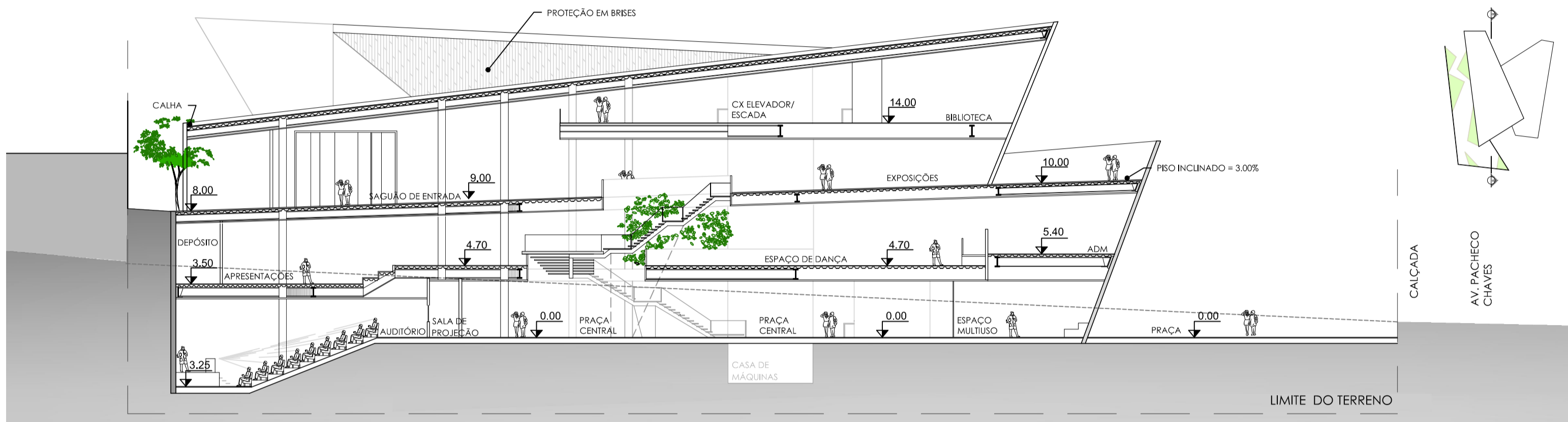


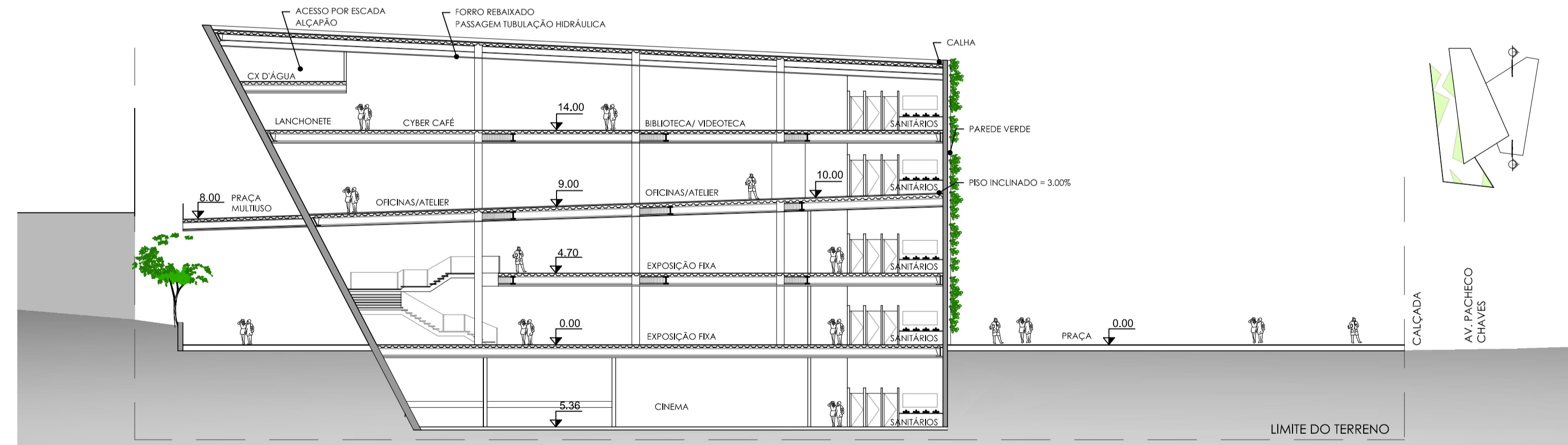
# CENTRO CULTURAL - VILA PRUDENTE



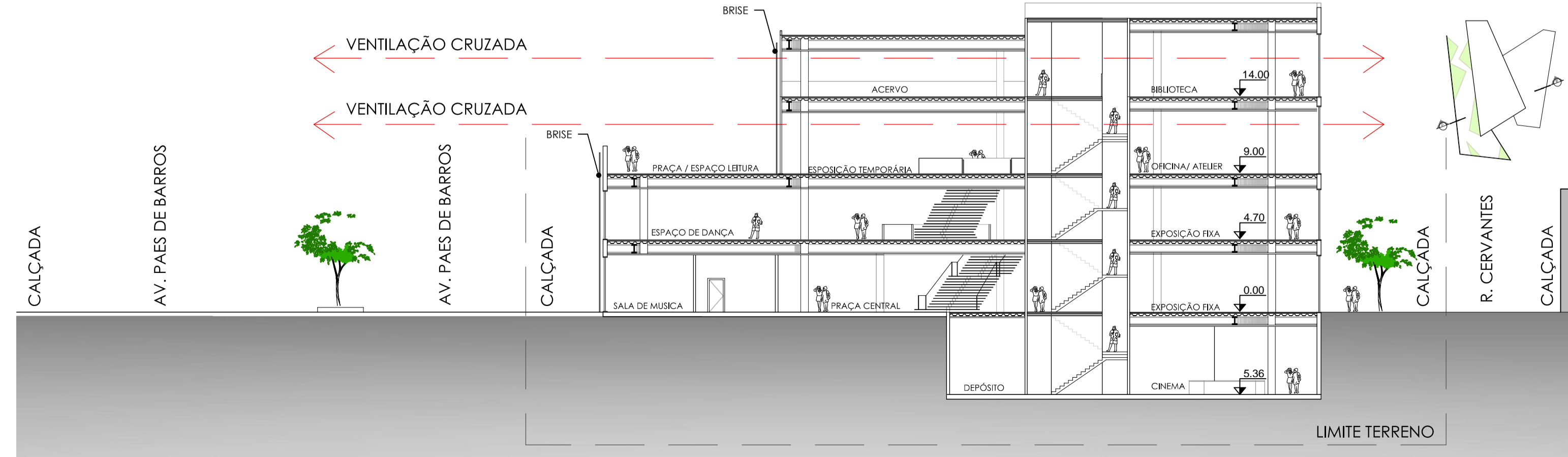
11 CORTE AA  
ESC.: 1:250



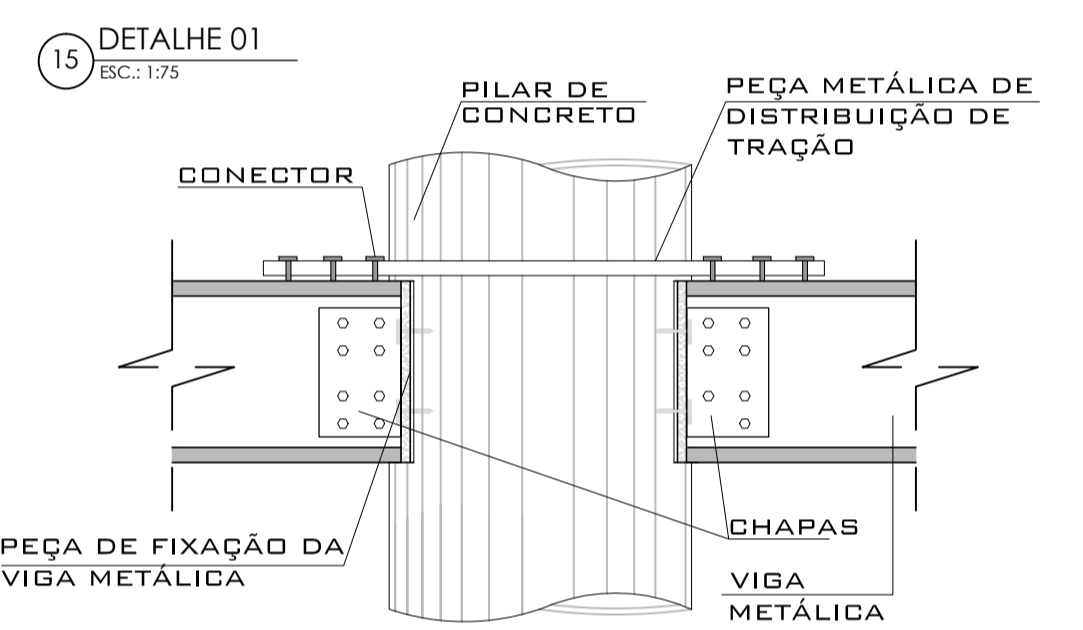
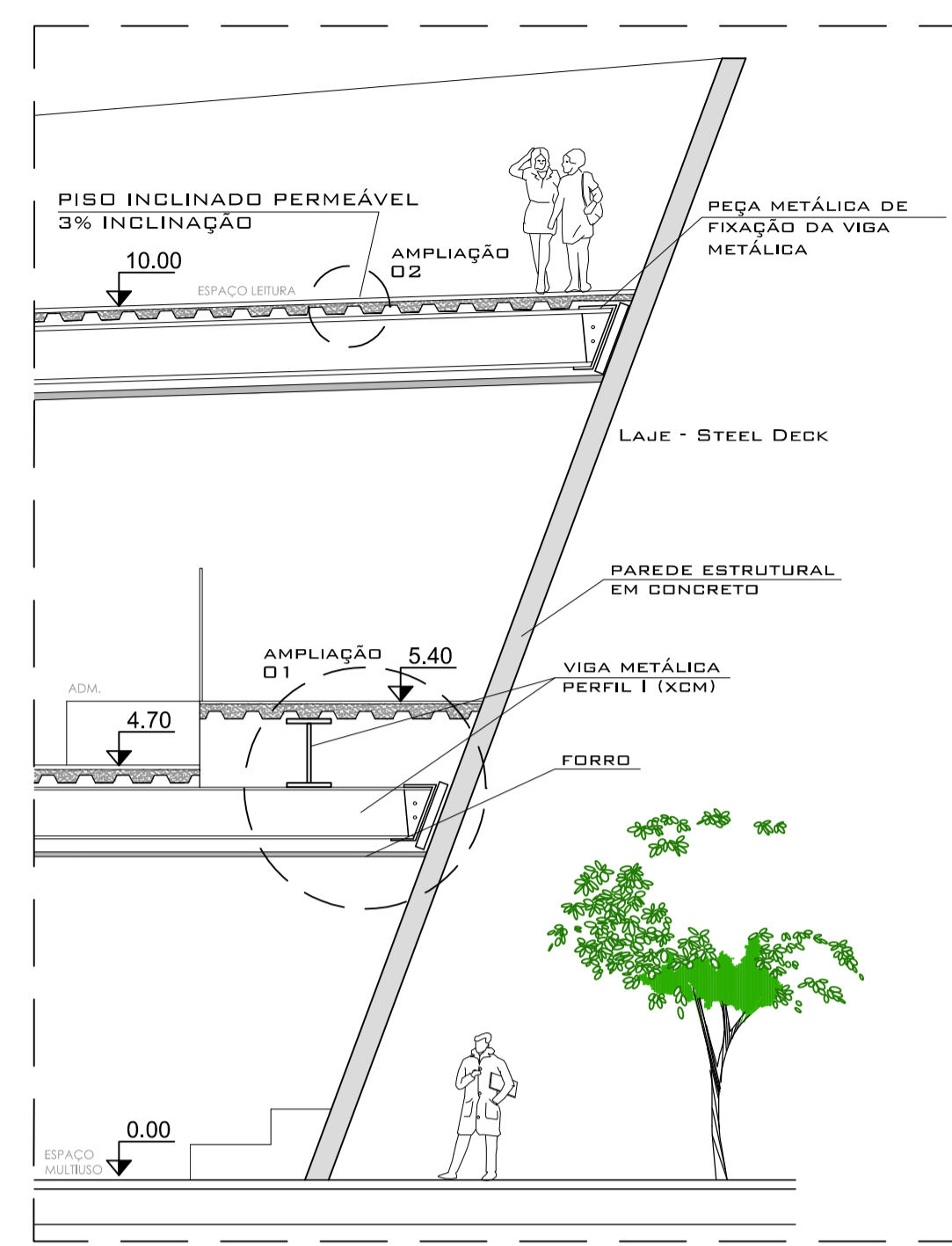
12 CORTE BB  
ESC.: 1:250



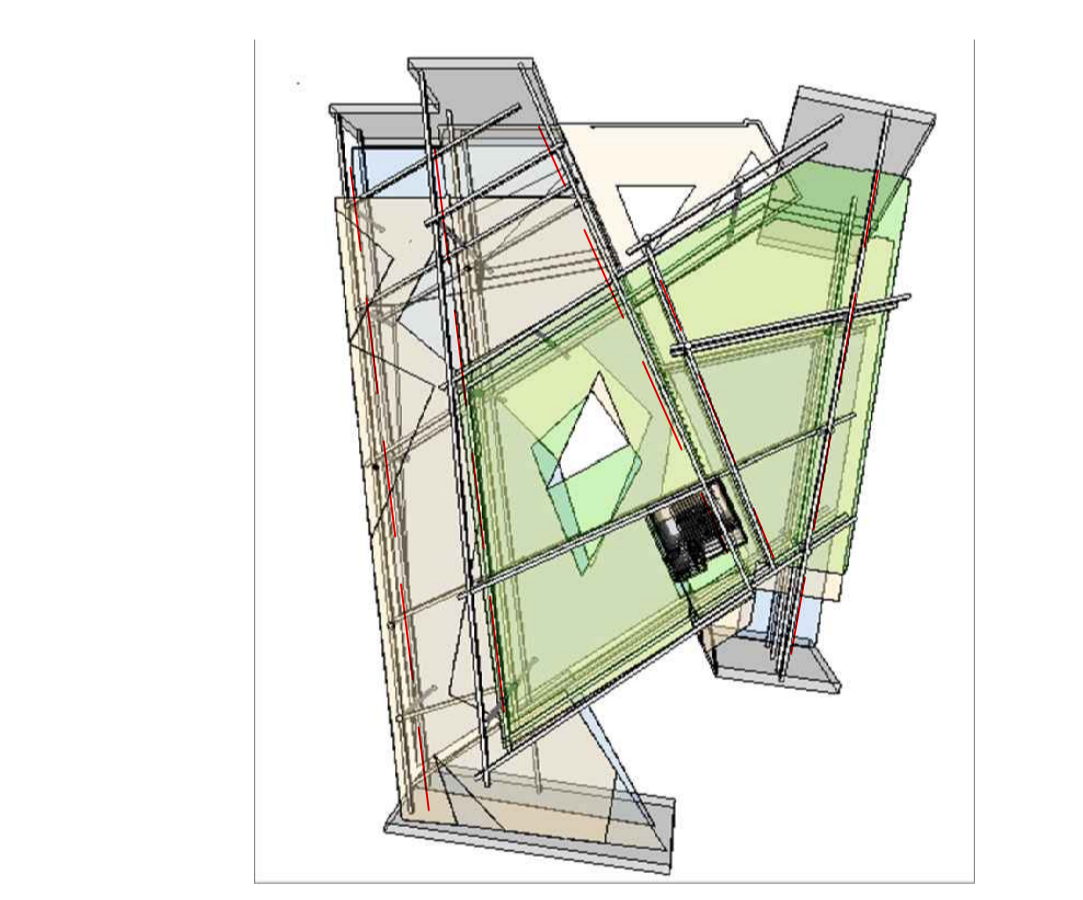
13 CORTE CC  
ESC.: 1:250



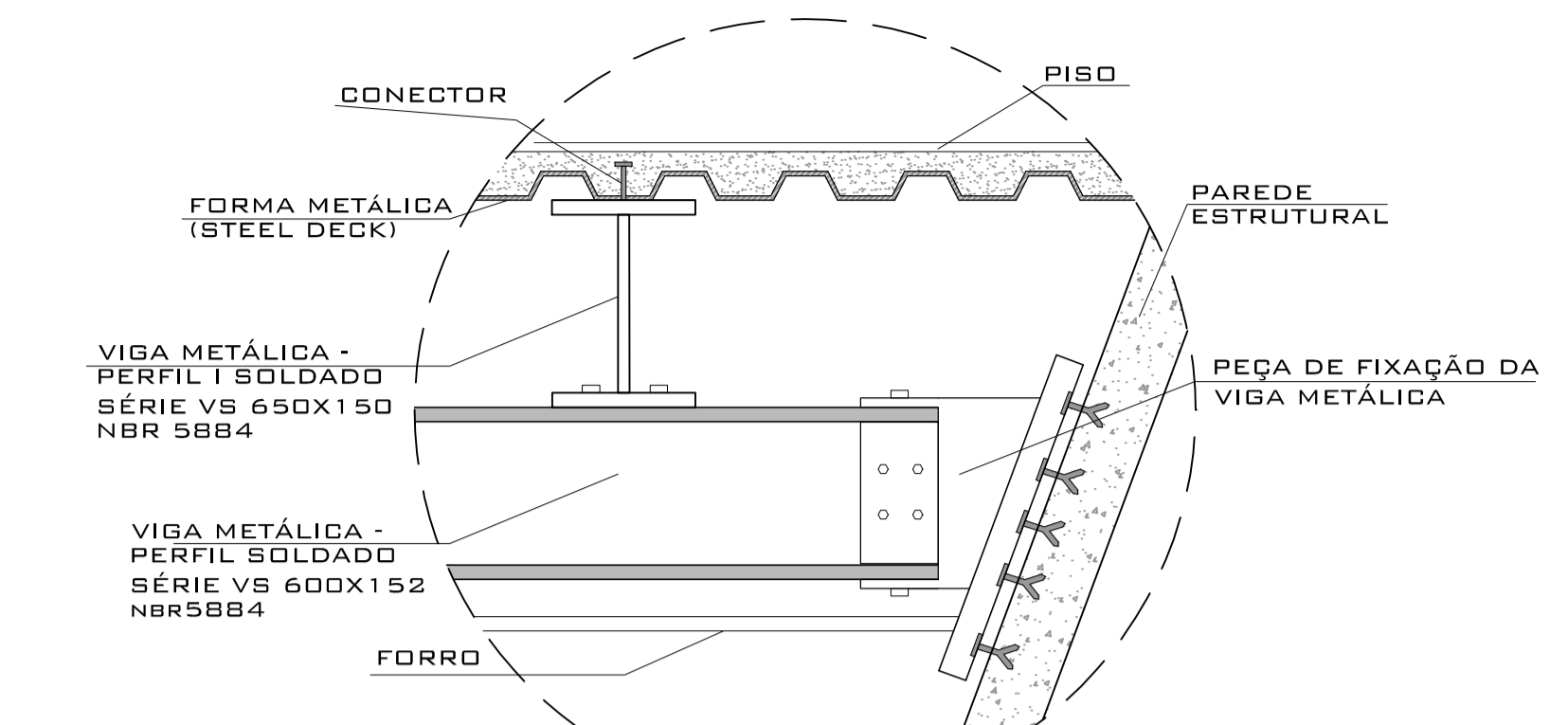
14 CORTE DD  
ESC.: 1:250



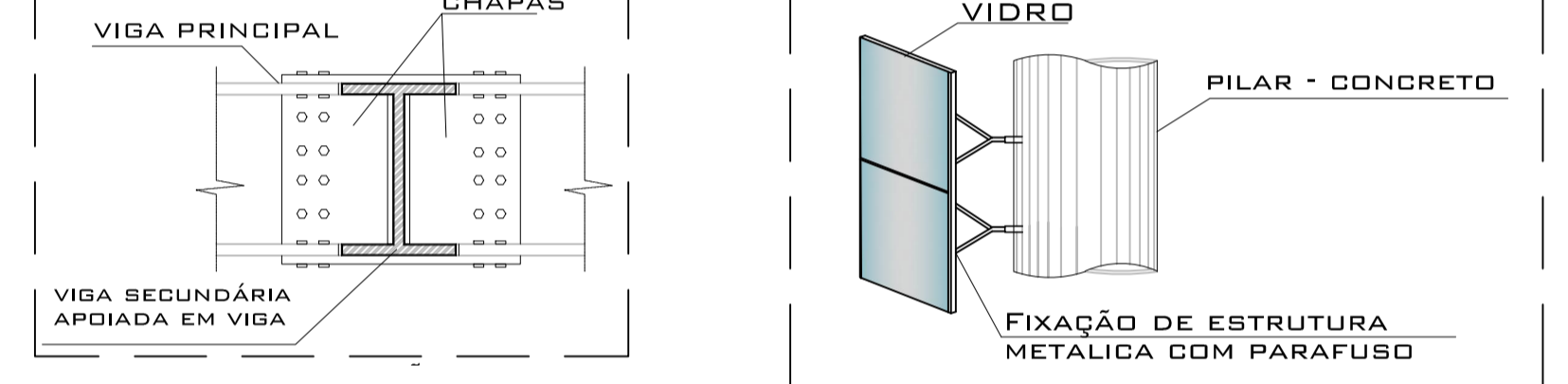
15 DETALHE 01  
ESC.: 1:75



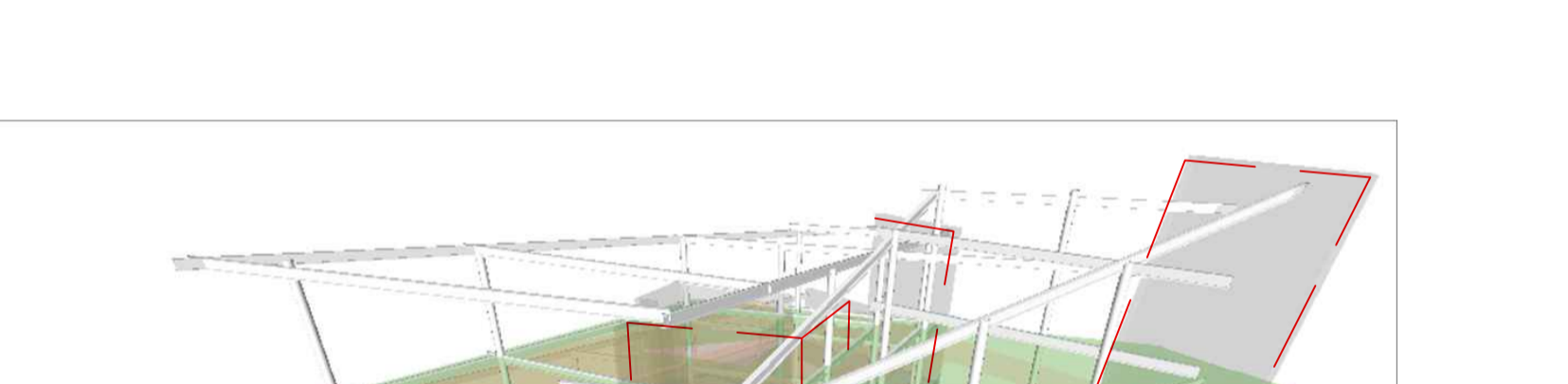
18 DETALHE 02 - FIXAÇÃO PILAR X VIGA  
ESC.: 1:25



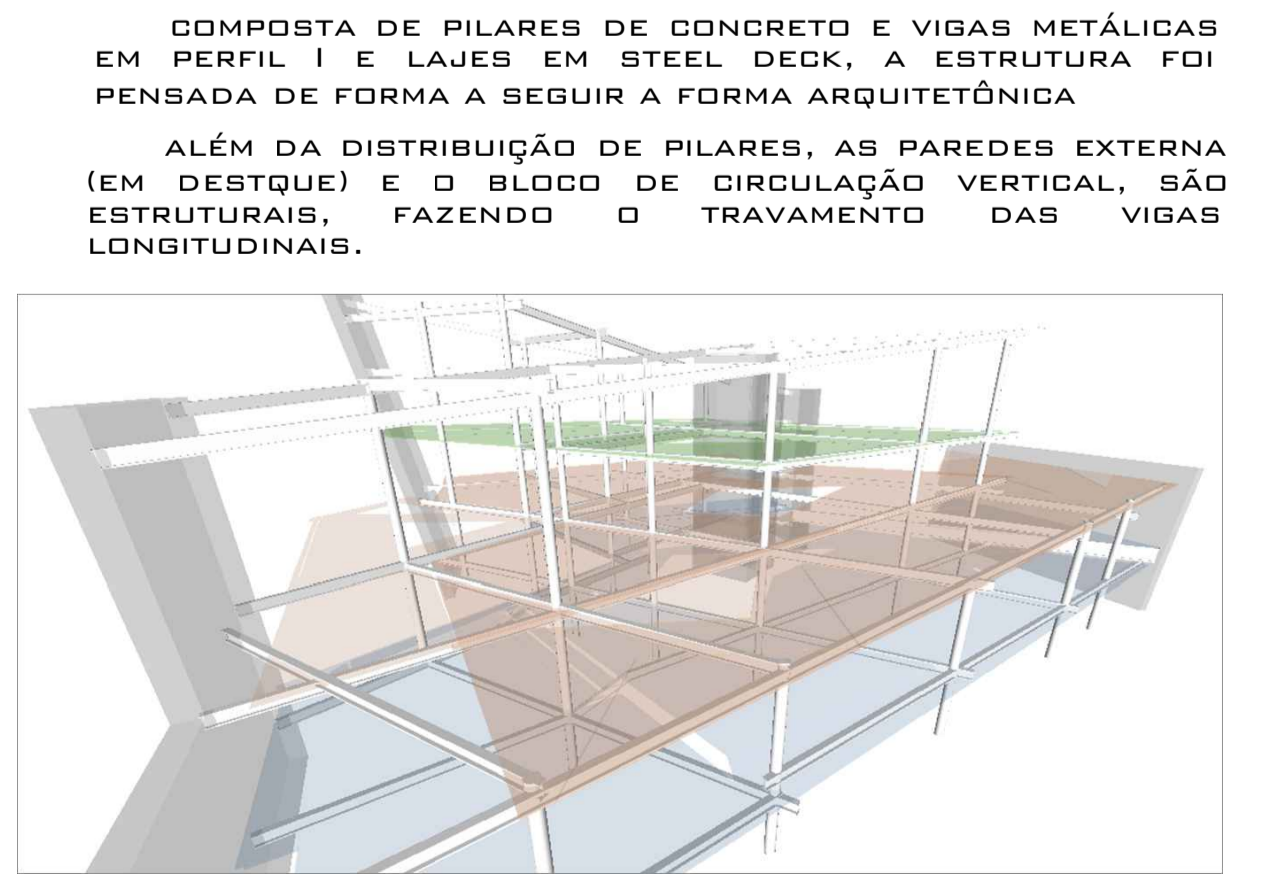
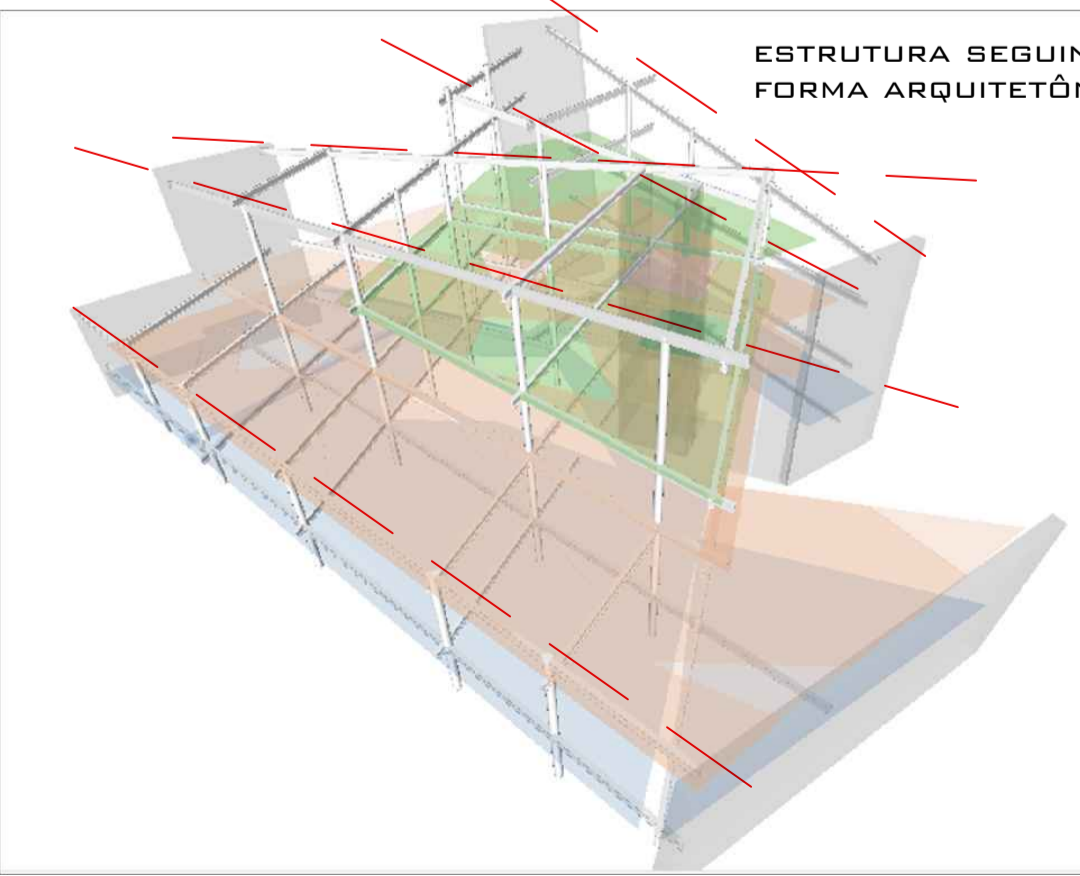
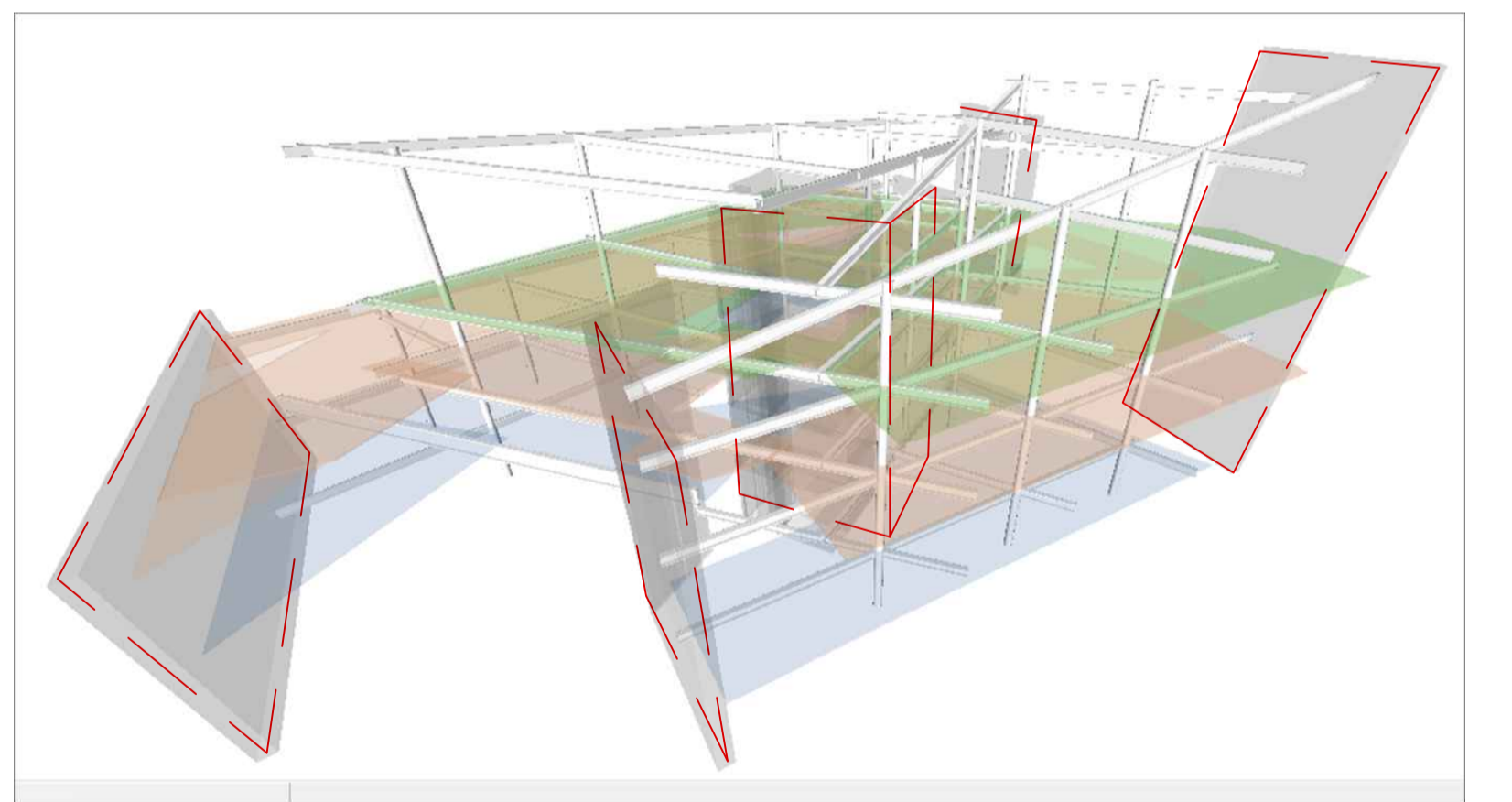
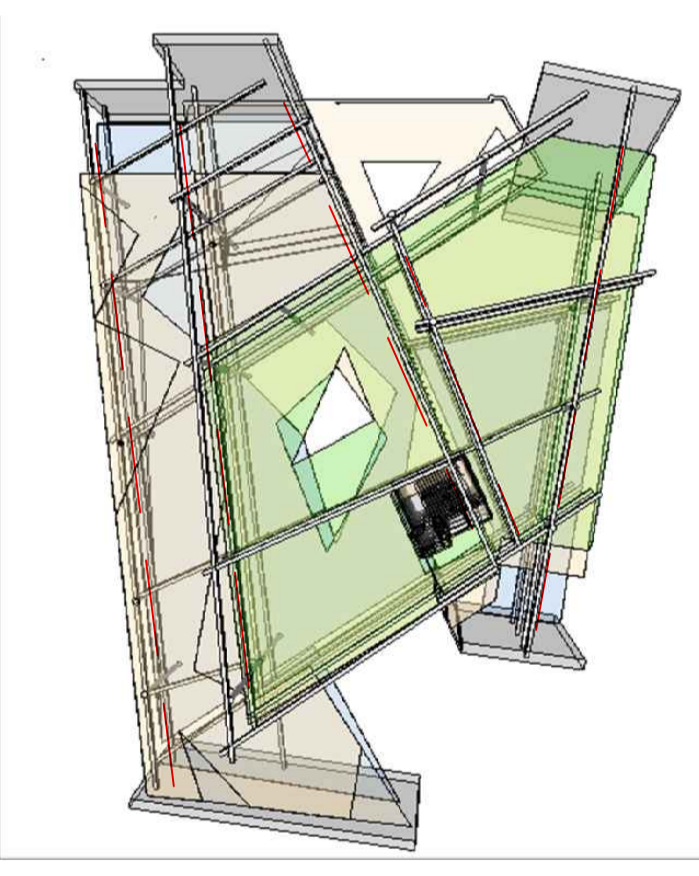
16 AMPLIAÇÃO 01  
ESC.: 1:25



19 DETALHE 03 - FIXAÇÃO VIGA X VIGA  
ESC.: 1:25



20 DETALHE 04 - FIXAÇÃO VIDRO X PILAR  
ESC.: 1:50



ESTRUTURA SEGUINDO A FORMA ARQUITETÔNICA

COMPOSTA DE PILARES DE CONCRETO E VIGAS METÁLICAS EM PERFIL I E LAJES EM STEEL DECK, A ESTRUTURA FOI PENSADA DE FORMA A SEGUIR A FORMA ARQUITETÔNICA

ALÉM DA DISTRIBUIÇÃO DE PILARES, AS PAREDES EXTERNA (EM DESTAQUE) E O BLOCO DE CIRCULAÇÃO VERTICAL, SÃO ESTRUTURAIS, FAZENDO O TRAVAMENTO DAS VIGAS LONGITUDINAIS.